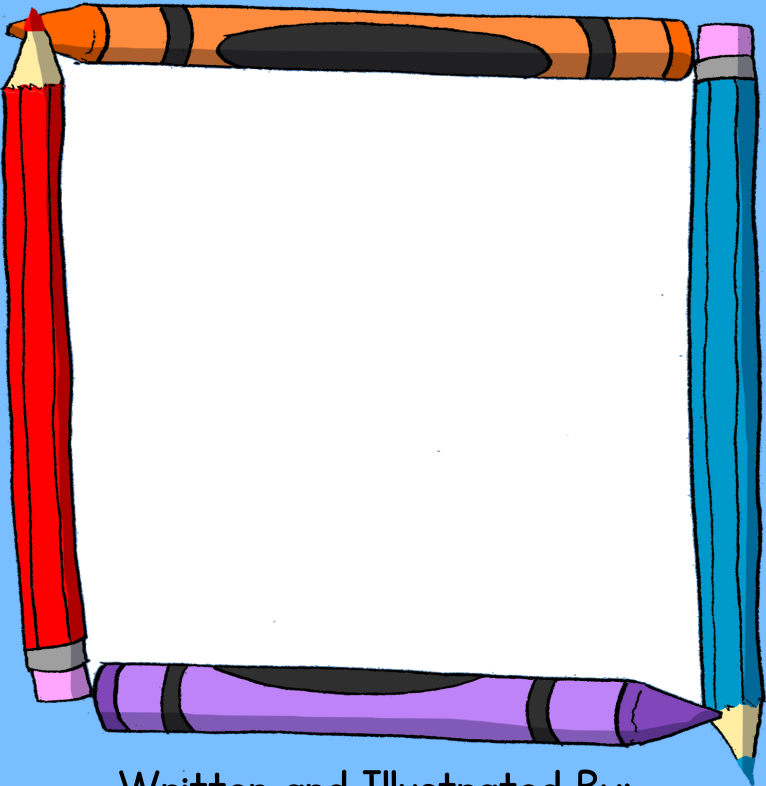




My Story

(Title)



Written and Illustrated By:

Welcome to your My Story Book!

Hello, Super Writers! Use your My Story book to write your very own PALS Town book!

Some tips for you:

- Use your imagination and take the pals on a new adventure.
- Include yourself as a pal, and even your friends and family members.
- Try out all the spelling and handwriting strategies you've been learning.
- Create a story you'd like to share with your friends and family or keep for yourself forever.

You are a Super Writer!

-The Pals

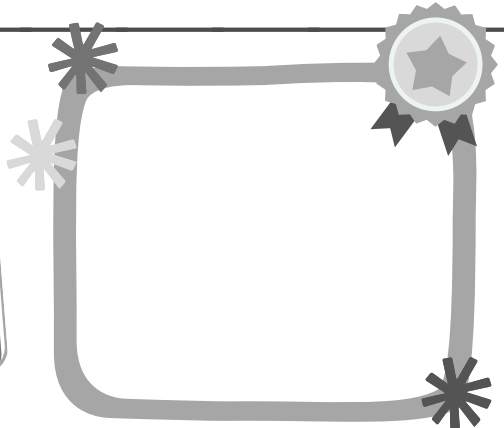
Check out the PALS Portal for more My Story fun and writing ideas!



About the Author

My name is:

Some special about me:



Draw or glue a picture of yourself in the frame.

Author Dedication



A book dedication is a special message where the author says "thank you" to someone important to them.

Write who this book is for below:





Handwriting practice area consisting of three sets of horizontal lines. Each set includes a solid top line, a dashed middle line, and a solid bottom line.



Handwriting practice area consisting of three sets of horizontal lines. Each set includes a solid top line, a dashed middle line, and a solid bottom line.



Handwriting practice area consisting of three sets of horizontal lines. Each set includes a solid top line, a dashed middle line, and a solid bottom line, providing a guide for letter height and placement.



Handwriting practice area consisting of three sets of horizontal lines. Each set includes a solid top line, a dashed middle line, and a solid bottom line, providing a guide for letter height and placement.



Handwriting practice area consisting of three sets of horizontal lines. Each set includes a solid top line, a dashed middle line, and a solid bottom line.



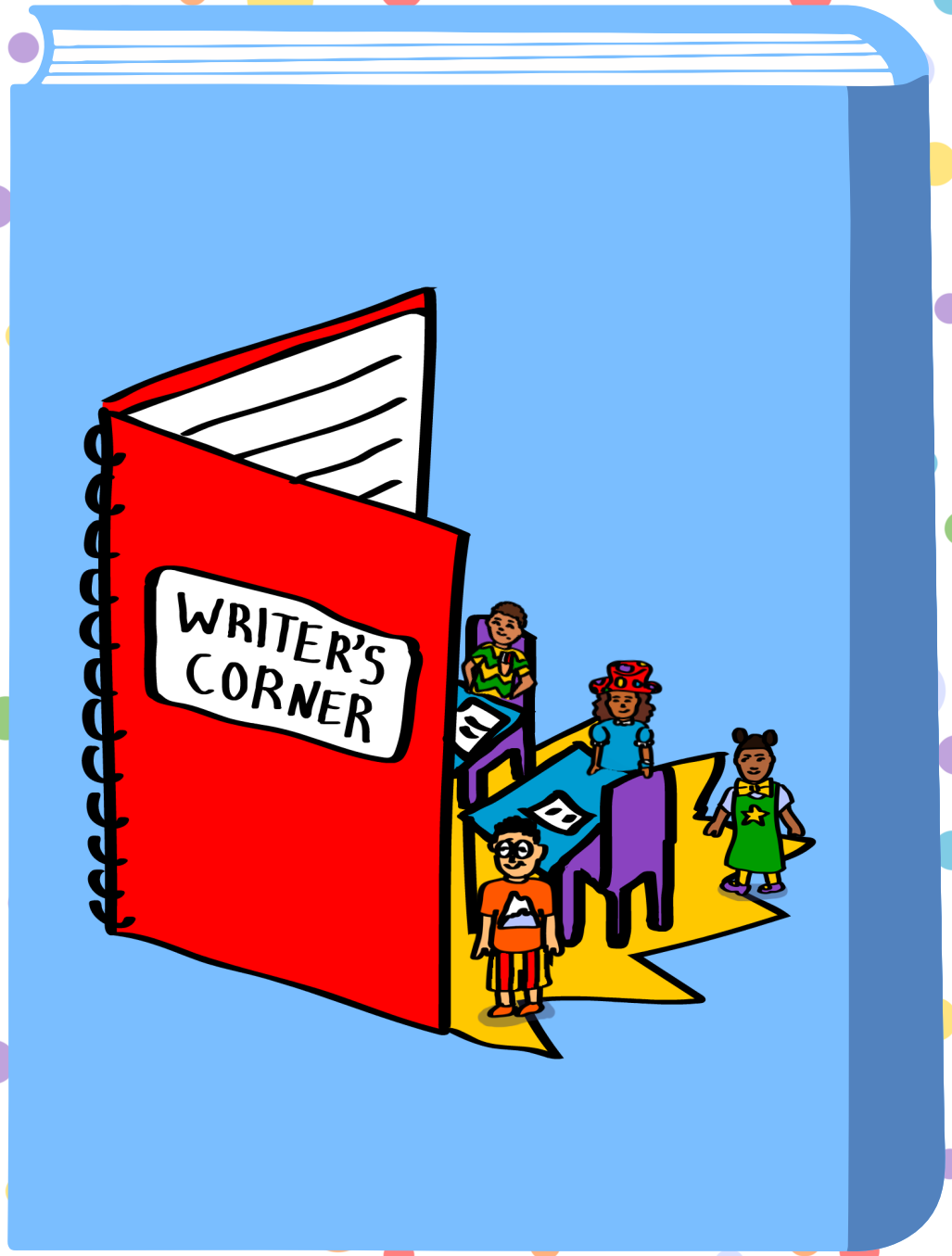
Handwriting practice area consisting of three sets of horizontal lines. Each set includes a solid top line, a dashed middle line, and a solid bottom line.



Handwriting practice area consisting of three sets of horizontal lines. Each set includes a solid top line, a dashed middle line, and a solid bottom line.



Handwriting practice area consisting of three sets of horizontal lines. Each set includes a solid top line, a dashed middle line, and a solid bottom line, providing a guide for letter height and placement.



WRITER'S
CORNER